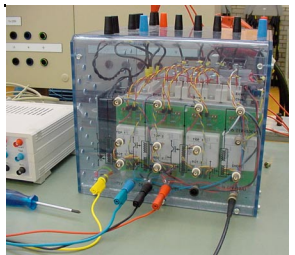


# Combine easy modeling and simulation speed in CASPOC with Matlab/Simulink toolboxes!



**NEW**

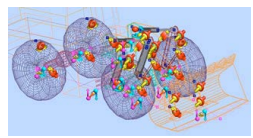
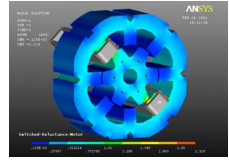
*Casproc is a fast simulation and animation tool that has no convergence problems*



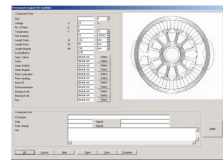
*Flexible modeling and high simulation speed.*

With the new Casproc coupling to Simulink feature, you have the advantage of modeling the control in Matlab/Simulink that is connected with the circuit simulator Casproc modeling the Power Electronics and Electrical Drive. Casproc was developed dedicated to the simulation and

animation of power electronics and electrical drives. It is therefore much better suited for the simulation of switching circuits with highly non-linear switching models.



*Coupling to various design/simulation tools, such as ANSYS, EULER and TESLA.*



## Coupling Casproc to Matlab/Simulink gives you:

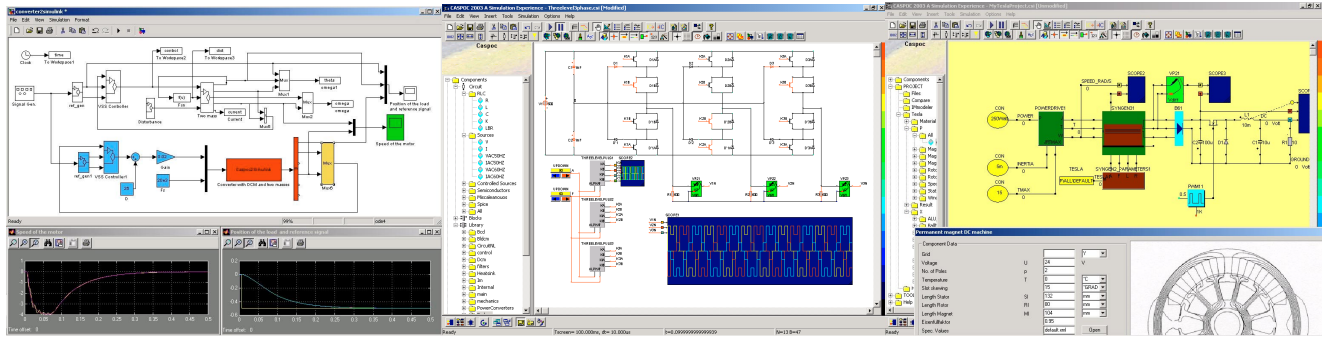
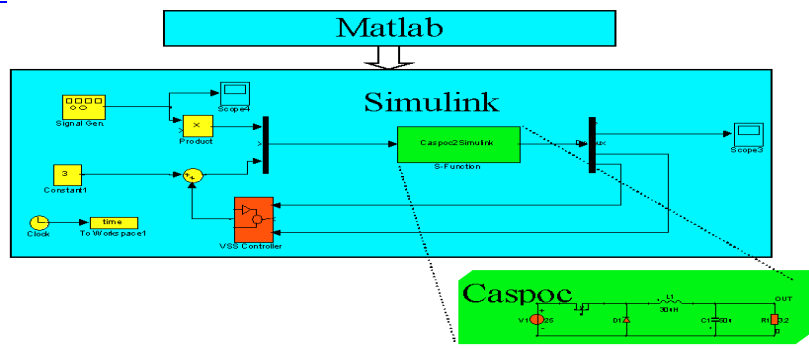
- Easy modeling of Power Electronics in Casproc!
- Co-simulation with Simulink!
- Couple to any toolbox in Matlab!
- Configure Casproc from the Matlab User Interface!
- Start Casproc from the Matlab User Interface!

## Learn how Casproc couples to Matlab/Simulink:

- To get your Casproc test version or for more information, visit [www.casproc.com](http://www.casproc.com)

*Design and develop complex Power Electronics and Electrical Drives faster and more efficient with Casproc rapid prototyping tools.*

# CASPOC & Matlab/Simulink



Visit [www.casproc.com](http://www.casproc.com) for more information and a test version.